

Case Study for:
GNC
Greenwich, Connecticut



GNC

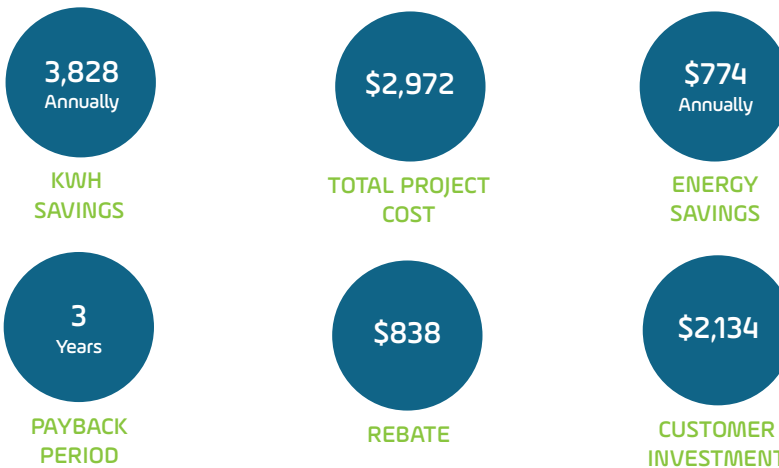
LIVE WELL

Case Study:
GNC

Case Study: GNC

“The lighting upgrade was a quick and clean process. The new LED lighting provides a much cleaner and brighter look to my store. I’m looking forward to the future cost saving benefits.”

-Michael Saluzzi, Owner, GNC (Store #6183)



PROJECT BENEFITS



**INCREASED LIGHT OUTPUT
IMPROVE STORE AESTHETIC**



IMPROVED SUSTAINABILITY

OPPORTUNITY

GNC, a vitamin and supplement retailer located in Greenwich, Connecticut, was looking for a way to reduce energy costs while improving environmental sustainability. The 1,400 square foot retail shop was comprised of outdated in-efficient fluorescent fixtures. With the opportunity to significantly scale down on energy consumption and enhance the overall quality of the store, the owner of GNC was looking for an energy service provider who could offer a turnkey approach to assist and manage the various phases of energy efficiency project development and implementation.

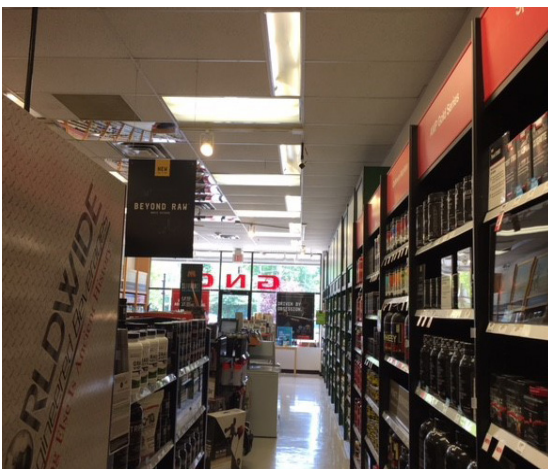
SOLUTION

Energy Source worked closely with the owner of GNC through each phase of the energy savings project. The project began with Energy Source’s initial assessment, where the team identified and developed a customized energy savings plan with the recommendation to retrofit the existing lighting system to advanced LED technology. To optimize performance, Eversource, the local utility provider, assisted with utility incentive management, providing incentives to cut down on the total project cost. The installation of LED lighting not only improved the total light output throughout the store but also created a more appealing atmosphere to showcase merchandise and attract the public. As a result of GNCs’ energy reductions, air pollutants will be reduced by 1,800 pounds of CO₂, 4 pounds of SO₂, 1 pound of NO₂, reflecting an environmental impact of saving 124 gallons of gas annually.

TURNKEY SERVICES

- Scope development
- Budgeting
- Project management
- Incentive procurement

BEFORE



AFTER

